

# bluebot™

## Clamp-On Smart Water Meter + App

One size fits all data capture device

Compatible with 3/4" - 2" PEX, PE, Copper L & M, PVC SCH 40 & 80, Galvanized. Special orders up to 4" are available.  
Additional calibrations coming soon.


[Sales Request](#)

[Demo Program](#)



CLICK ME OR SCAN  
ME FOR DETAILED  
EXPLAINER VIDEOS!



 **Call**  
(831) 275-2715

 **Click**

 **Email**

## FLOW METER DIMENSIONS



<b>LENGTH</b>	<b>WEIGHT (LOOSE)</b>
10.8cm   4.25"	0.36kg   0.8lbs
<b>WIDTH</b>	<b>CLAMPS (OPEN)</b>
12cm   4.75"	13.3cm   5.25"
<b>HEIGHT</b>	<b>CLAMPS (CLOSED)</b>
5.7cm   2.25"	5.7cm   2.25"

## INSTALLATION

### TIME TO INSTALL

5-10 MINUTES

### INSTALL ORIENTATION

UNIVERSAL (HORIZONTAL, VERTICAL)

### METHOD OF INSTALL

CLAMP ON (NO PIPE CUTTING REQUIRED)

### 3-STEP INSTALL PROCESS

SURVEY -> CONNECT -> CLAMP

CLICK ME OR SCAN  
ME FOR DETAILED  
EXPLAINER VIDEOS!



## PACKAGE DIMENSIONS




<b>LENGTH</b>	<b>HEIGHT</b>
25cm   9.25"	9.5cm   3.75"
<b>WIDTH</b>	<b>WEIGHT</b>
16.5cm   6.5"	0.76kg   1.6lbs

### BOX CONTENTS

Each package includes a device and setup kit with the following:

1x bluebot smart home water meter	1x Set of plastic clamp holders
1x 10' USB-C cable with Type-A plug	1x Sand paper disc
5x Ultrasonic gel replacement pads	1x Microfiber cleaning towel

 **Call**  
(831) 275-2715

 **Click**

 **Email**

# GENERAL

## MATERIAL COMPOSITION

The device is an injection molded plastic shell with CNC acrylic case housing the piezoelectric sensor train and AI driven servo DC motor. Additional components include gel pads made from silicon, electronics made from fiberglass, copper, brass, steel and crystal.

### MEASURED FLUID

WATER, GREYWATER

### ENCLOSURE RATING

IP67 / NEMA 6

### CERTIFICATION



### OPERATING TEMPERATURE RANGE

0° C - 50° C | 32° F TO 122° F

### PATENT

US 105510231

### FLOW TECHNOLOGY

TRANSIT-TIME ULTRASONIC

### INDOOR / OUTDOOR USE

Water, splash, dust and UV resistant with conformal waterproof coated electronics as a best practice.

# INPUT POWER

### POWER OPERATION

DEDICATED (NO BATTERIES REQUIRED)

### CABLE LENGTH

3 METERS | 10 FEET

### PLUG TYPE

STANDARD USA PLUG

### PLUG INTO UNIT

USB-C

### INPUT VOLTAGE

5V, 1A

### CABLE COLOR

BLACK

# CONNECTIVITY

### CONNECTIVITY

Wi-Fi ([RF COMING SOON, PREORDER NOW!](#))

### HARDWARE REQUIRED

iOS DEVICE, ANDROID DEVICE

### Wi-Fi RANGE

10 METERS | 30 FEET

### RECOMMENDED Wi-Fi BOOSTERS

NETGEAR, EERO, UBIQUITY

### Wi-Fi BOOSTER LOCATIONS

BASEMENT, CEILING, DISTANCES OVER 20 FEET



**Call**  
(831) 275-2715



**Click**



**Email**

## COMPATIBILITY

### PIPE SIZE RANGE

3/4", 1", 1.25", 1.5", 2" (UP TO 4" AVAILABLE)

### LARGER PIPE SIZES

2.5", 3", 4" (CUSTOM ORDER ONLY)

### PIPE TYPE COMPATIBILITY

COPPER L & M, PVC SCH 40 & 80, GALVANIZED, PEX, PE

## ACCURACY

### ACCURACY

ACCURACY: +/- 1.0% TO 2.0% OF FLOW READING (PIPE SIZE DEPENDENT)

### REPEATABILITY

+/- 0.2% OF FLOW READING

### HIGH FLOW CAPABILITY

UNLIMITED (MAX FLOW FOR PIPE SIZE)

### RESOLUTION

.000000 (SIX DECIMAL POINTS)

### LOW FLOW CAPABILITY

0.2GPM TO 0.5GPM

## CALIBRATION

### FACTORY CALIBRATION

EACH UNIT IS CALIBRATED ON A CERTIFIED PRIMARY FLOW STANDARD OVER ITS ENTIRE FLOW RANGE WITH A FOUR-POINT FLOW TEST IN OUR STATE-OF-THE-ART FLOW METROLOGY LABORATORY (CALIBRATION CERTIFICATE AVAILABLE ON REQUEST).

### K-FACTOR (APP CALIBRATION TOOL)

SET EXPECTED VS ACTUAL WATER FLOW USAGE

### ZERO POINT (APP CALIBRATION TOOL)

REMOVE ULTRASONIC NOISE (IF PRESENT)

### ANY PIPE SIZE OR TYPE - ONE SOLUTION



**Call**  
(831) 275-2715



**Click**



**Email**

## PHONE APP (ANDROID & iOS)

With a wide range of powerful features and a user-friendly interface, the Bluebot Water app puts you in full command of your water consumption, helping you save money, conserve resources, and contribute to a sustainable future.

### WATER SAVING TOOLS

REAL-TIME FLOW, HISTORICAL DATA, DOLLARIZE™ WATER USAGE

### DYNAMIC ALERTING & BUDGETING

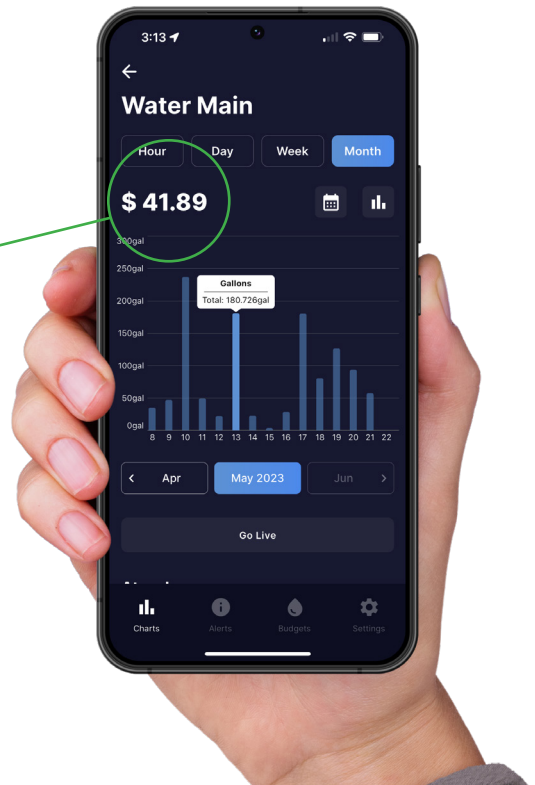
RECEIVE INSTANT UPDATES ON WATER USAGE, LEAKS, ETC.

### SUB-METERING / COST ALLOCATION

DESIGNED FOR VISIBILITY OF MULTIPLE DEVICES

### DATA ACCESS (ACCOUNT SHARING)

UNLIMITED DATA SHARING AND ACCOUNT SHARING



## WEB PORTAL (IN PROGRESS)

### HIGH VOLUME DESIGN

AGGREGATE GROUPS OF METER DATA

### EXPORT DATA

MULTIPLE FORMATS .XLS, .CSV, .PDF, ETC.

### SUBMETERING / COST ALLOCATION

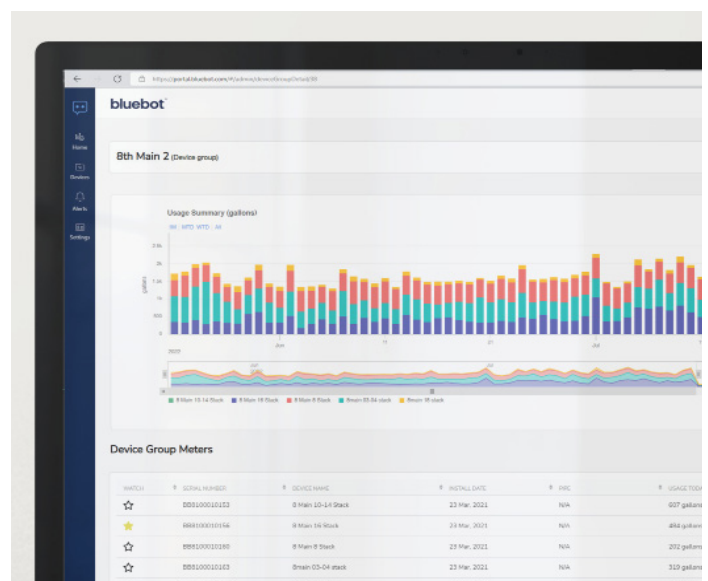
DESIGNED FOR VISIBILITY OF MULTIPLE DEVICES

### PARENT & CHILD GROUPING

ORGANIZE FLOW METERS INTO GROUPS

### COMING SOON!

AUTOMATIC REPORTING, ROBUST DATA EXPORT & API



 **Call**  
(831) 275-2715

 **Click**

 **Email**



## Water Conservation Incentives

Rebates up to \$200 are available by county.  
Search this database to see if you qualify  
and buy your bluebot today.

Search rebates by city, state or county.

[Rebate Search](#)

[Buy Now](#)